

2020 ANNUAL REPORT

ALTERNATIVES

CORRECTIONS TO COMMUNITY

CELEBRATING



ALTERNATIVES



People Working
Together to
Mend Lives and
Strengthen
Communities

SERVICE IMPACTS DUE TO COVID-19



Alternatives, Inc. has implemented best practices to keep staff and residents safe amidst the COVID-19 pandemic. In March, FEMA's Incident Command Structure was implemented, and meetings are held every weekday to discuss protocols, review resident and staff symptoms, and ensure the organization has adequate PPE.

All staff, residents, vendors, and others coming to the facilities must undergo temperature and symptom screening. Social distancing is enforced, sanitation practices are heightened,



masks are required for anyone on the facility grounds, and full, proper use of PPE is being implemented for interactions between staff and residents/clients.

Alternatives was the first community corrections agency to implement a mandatory 14-day quarantine for all incoming residents.

PERSEVERING DESPITE A PANDEMIC

Matthew was sentenced to 1 year Supervised Misdemeanor Probation with a SCRAM bracelet after a third offense DUI conviction. He began his sentence with a 30-day jail stay. Afterward, Matthew remained compliant on both misdemeanor probation and the SCRAM program. He maintained full-time employment as a cook at the Red Door until COVID-19 forced him to be temporarily unemployed. Despite this added stress, Matthew maintained sobriety and completed Intensive Outpatient Treatment at the VA and continues to attend weekly AA meetings. Recently, Matthew returned to work full-time at the Red Door where he proudly oversees the restaurant's lunch specials. Due to his compliance and completion of programming, he was granted an early termination from misdemeanor probation.



FROM THE CEO

The story of Alternatives is not written in its financials, buildings, vehicles, or technology. Rather, it is the story of people working together to mend lives and strengthen our community. People involved in the correctional and justice systems face stiff challenges, but in overcoming them can unleash extraordinary potential for change and growth. This, then, is the story of Alternatives; seeing potential where others may not, caring for those whose need is great, and succeeding when others succeed.



David O. Armstrong,
CEO
Alternatives, Inc.

FROM THE BOARD PRESIDENT

I joined the Board of Directors 6 years ago at Alternatives and if I had to sum up my opinion of the organization, I would say:

Alternatives, Inc. is an unsung hero when it comes to creating a healthier and safer community in the areas it serves. The dedicated staff is deeply committed to helping each of our clients become more productive citizens and I know I speak on behalf of the entire board when I say how proud we are to be affiliated with this great organization.



Todd Buchanan
Board President,
Alternatives, Inc.

TABLE OF CONTENTS



Community Impact By-the-Numbers.....4

Timeline and Key Milestones.....4

Alternatives, Inc.....5

Alpha House.....6

Passages.....8

The Big Move.....10

Compass.....11

Beta Alternatives.....12

Recidivism, Responsibility, and Success.....13

Staff Recognition.....14

Community.....15

Board of Directors.....15

Follow us on <https://www.facebook.com/altincbillings>
<https://altinc.net/>

COMMUNITY IMPACT BY-THE-NUMBERS



\$4,700,548



\$862,231



\$1,568,642



\$185,670



2,812



849,938

COMMUNITY EMPLOYERS

117

HOURS WORKED BY CLIENTS

618,086

SUBSTANCE USE DISORDER ASSESSMENTS REFERRED

514

TREATMENT & EDUCATION PROGRAMS REFERRED

1,300+



ALTERNATIVES, INC.

LEADING COMMUNITY CORRECTIONS AND OFFENDER RE-ENTRY STRATEGIES SINCE 1980

SINCE 1980, ALTERNATIVES, INC. HAS BEEN AT THE FOREFRONT OF COMMUNITY-BASED CORRECTIONAL PROGRAMS. When the general population thinks about corrections, they typically think about prisons and jails. In reality, the greater number of felony offenders (more than 10,000) are in Montana’s communities –either supervised by probation and parole officers, or in community corrections facilities.

At Alternatives, we believe that public safety is improved when prison inmates and other offenders are reintroduced to the community through structured programs that involve treatment services, assistance in locating employment, 24-hour a day supervision and case management. Moreover, communities benefit through having offenders pay at least a portion of the cost of supervision vs. having taxpayers bear the full cost.

To address the challenges of a diverse clientele, Alternatives

operates three facilities: Alpha House men’s prerelease center; Passages women’s prerelease center; Beta Jail Alternatives/Compass community treatment. Two additional satellite jail alternative programs are

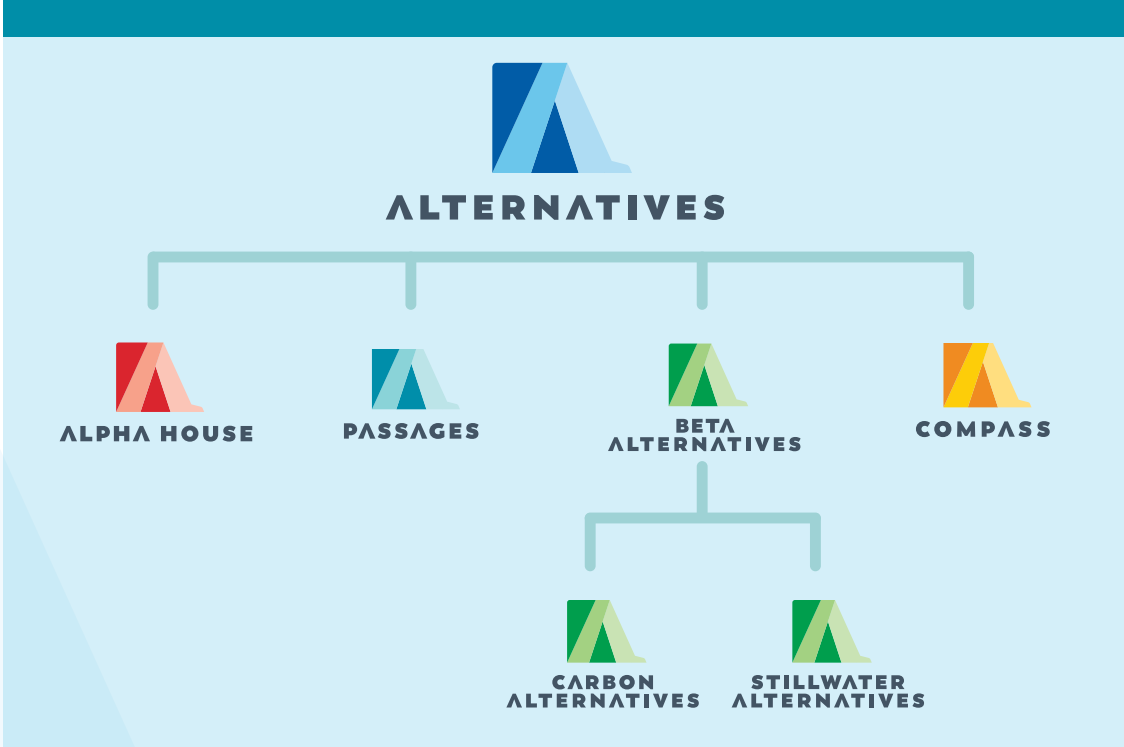
in Columbus and Red Lodge. Through the prerelease centers, Alternatives blends accountability and public safety. The Beta Jail

Alternatives program provides the necessary supervision, treatment, and education to

keep misdemeanor offenders out of jail in favor of being active, contributing members of society.

In 2020, Alternatives relocated the Administration, Beta and Compass programs into the newly renovated ABC Building to accommodate the expansion of community supervision and treatment services.

A non-profit organization, Alternatives contracts with the Montana Department of Corrections, Federal Bureau of Prisons, United States Probation Office, Department of Public Health and Human Services, and local governments in Yellowstone, Carbon, and Stillwater Counties.



HISTORY & TIMELINE

| 1978 | 1980 | 1984 | 1988 | 1990 | 1993 | 1996 | 2000 | 2007 | 2010 | 2017 | 2019 | 2020 | 2020 |
|---|---|---|---|---|--|---|---|---|-------------------------------------|--|--|--|---|
| Alternatives Incorporated | Alpha House opens with 5 men released from Montana State Prison | Beta Jail Alternatives opens providing restitution collection and community service | Treatment services expand at Alpha House to provide Anger Management and Chemical Dependency services | Satellite offices for jail alternatives expand to surrounding counties and Alternatives begins to use electronic monitoring—the first to do so in the state | Alternatives begins taking female offenders in Women’s LifeSkills Center housed at Alpha House | Evidence-based program begins with Moral Reconation Therapy used to address criminal thinking | Beta begins offering misdemeanor probation services to Yellowstone County and Billings municipal courts | Passages opens, creating a 60-day inpatient Drug and Alcohol Treatment Unit, and a secure Assessment, Sanction, and Revocation Unit for all female Department of Correction offenders statewide | CAP [Culinary Arts Program] Started | Alternatives is recognized by Montana as a certified Substance Use Disorder and Mental Health Treatment Provider. Can now bill Medicaid and other major insurances for these services. | Correctional Program Checklist Adopted, Peace Officer Standardized Training Basic Course offered | Move to new ABC Building [Administration, Beta, Compass] | Compass Offers Substance Abuse Disorder and Mental Health Treatment |
| 4 ALTERNATIVES, INC. 2020 ANNUAL REPORT | | | | | | | | | | | | ALTERNATIVES, INC. 2020 ANNUAL REPORT 5 | |



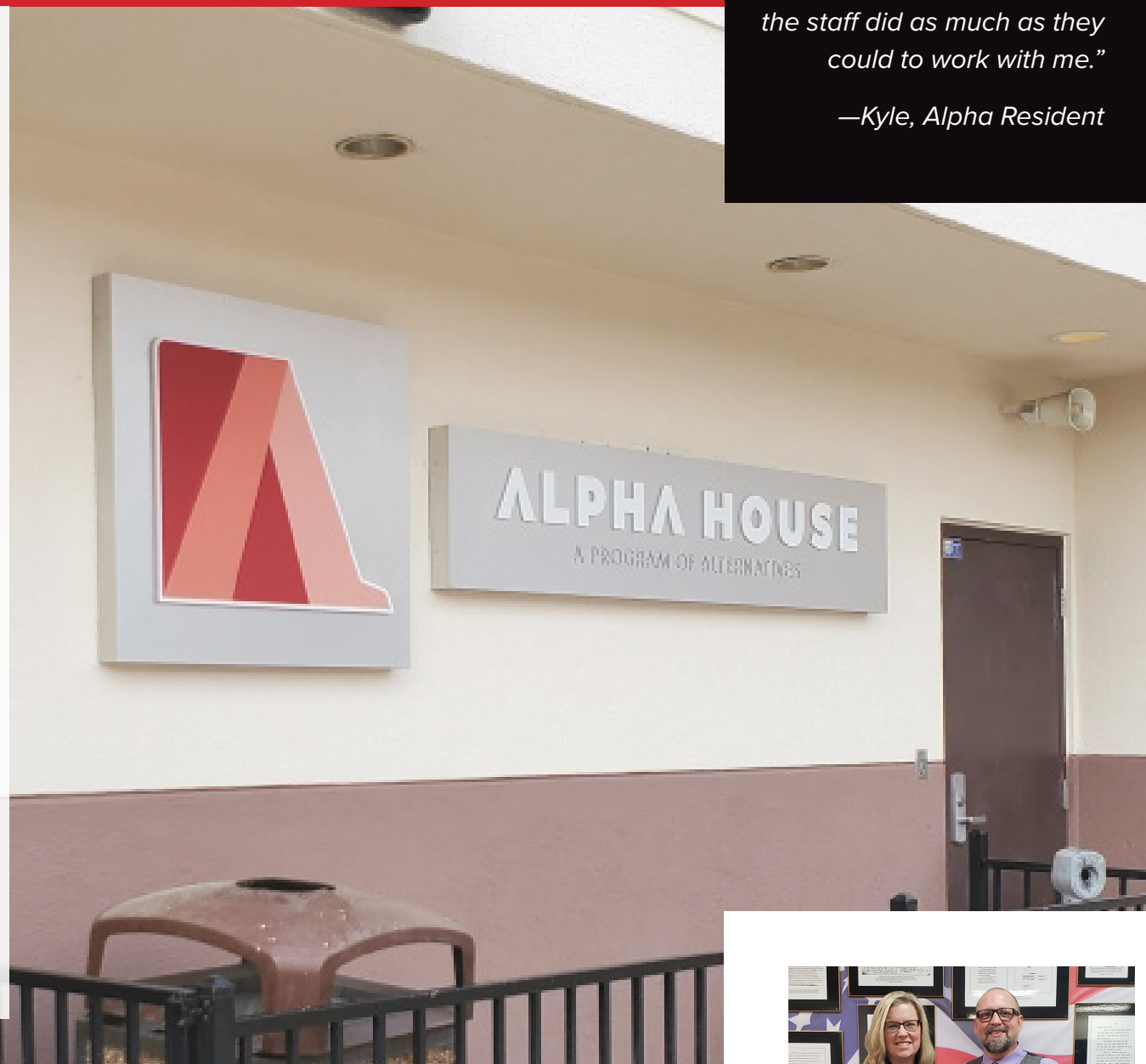
ALPHA HOUSE

Located in Billings, the Alpha House men's prerelease center (PRC) serves as an intermediate step between prisons and the community. Started in 1980 as a 5-bed prerelease center, today Alpha House has grown into a robust, evidence-based organization that utilizes best practices in addressing individual risks and needs of each offender.

Offenders live in the PRC under 24-hour-a-day supervision for approximately six months. Residents are required to obtain employment, participate in counseling, abstain from the use of drugs or alcohol, maintain strict accountability for facility rules, obtain a residence for release, and demonstrate that they are ready to return to the community as productive citizens.

With a focus on re-entry to the community, Alpha House provides many services to offenders including treatment for substance use and mental health, employment coaching, job placement, help securing housing, budgeting, assistance in accruing savings, and paying restitution and fines.

The intent of PRC programs is to give offenders the opportunity to return to society in a gradual manner with the skills and treatment needed to establish a healthy, crime-free, substance-free lifestyle.



It taught me how to be more responsible with my money and how to set better boundaries for myself. I thought for the most part, the staff did as much as they could to work with me."

—Kyle, Alpha Resident

ALPHA HOUSE AND PUBLIC SAFETY

Security and public safety are of paramount importance. Candidates for placement in Alpha House undergo a rigorous vetting process before acceptance:

- Candidates are screened by law enforcement representatives, Probation and Parole, a community member, and in many cases, treatment providers.

- Each resident is assigned a case manager and case management is organized by teams to achieve enhanced focus, task orientation, and staff commitment.

- Security is paramount. This involves multiple daily headcounts, phone and on-site checks in the community, random urinalysis testing, regular random personal and living area searches, and frequent breathalyzer testing. Alpha House has a zero-tolerance policy for drug and alcohol use.

- The Job Development Program works with residents to enhance job searching abilities, interview skills, and client awareness of appropriate standards for dress and demeanor.

- The program offers 14 different treatment services / educational curricula.

- Alpha House has a treatment-oriented recreation program for residents that includes outings in the community, participation in sporting events, art and music projects.

1 According to resident exit surveys; 2 According to the 2018 DOC Biennial report the daily costs of housing an offender in MSP (\$109.51) vs. the contracted per diem rate for an offender at Alpha House (\$52.40) if at full capacity

Melanie Schwarz, Board Member
John Williams, Alpha House Director

98%
OF RESIDENTS
COMPLETE WHAT
THEY SET OUT TO
ACCOMPLISH WHILE
AT ALPHA HOUSE¹

1,488
RESIDENTIAL
ENROLLMENTS

856
RESIDENTS IN 2020

213,598
TOTAL
RESIDENTIAL DAYS

\$12 MILLION
TAXPAYER SAVINGS
IN HOUSING FEES AT
MONTANA STATE
PRISON²



CORRECTIONAL PROGRAM CHECKLIST (CPC)



The Correctional Program Checklist (CPC) is an evidence-based tool by the University of Cincinnati Corrections Institute to assess correctional intervention programs to ascertain how closely they align with principles of effective intervention. CPC measures treatment and supervision services with adherence to risk, needs, and responsivity issues of the offender.

PROJECT BRIEFING

- 2019 Legislative Session adopted CPC as evidence-based requirements for Community Corrections Agencies.
- Alpha House participated in an CPC assessment in February 2020.
- Alpha scored in the National Average or similar programs and will audit again in 2023.

CPC TRAINING

- All staff have read "Reducing Recidivism."
- 68 staff members have participated in certified training.
- All agency policies, hiring practices, reward and discipline systems are incorporating CPC.



PASSAGES

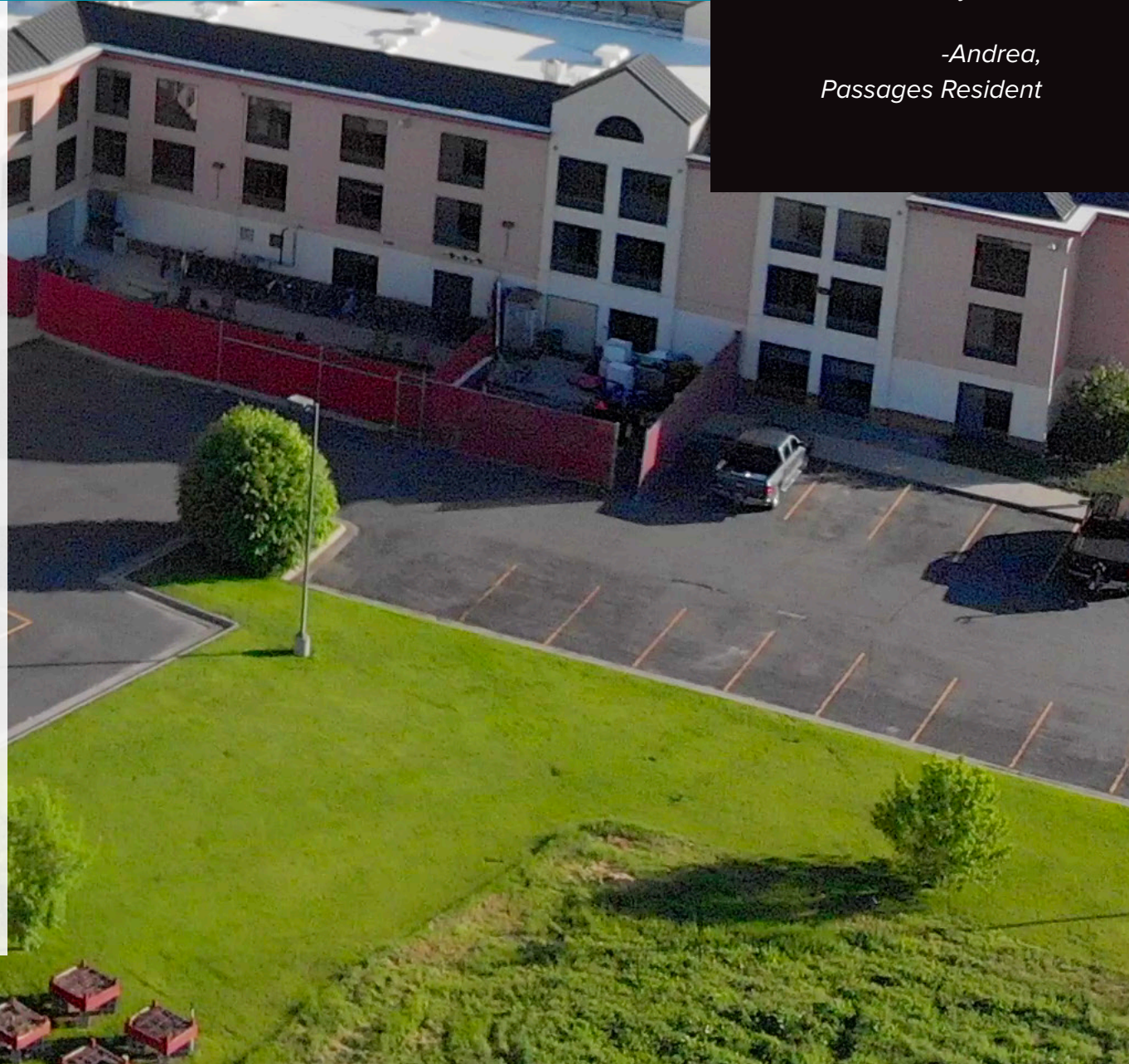
COMMUNITY-BASED CORRECTIONS FOR WOMEN

Opened in 2007, Passages is a women's community-based correctional facility serving State and Federal inmates. The facility operates three separate units: inpatient Alcohol and Drug Treatment unit (ADT); an intake unit that provides assessments, sanctions and acute mental health care; and a prerelease unit.

The Assessment, Sanction, Revocation Center (ASRC) is a 50-bed unit for women offenders. Newly sentenced women offenders and offenders whose behavior warrants disciplinary action may be placed in ASRC for assessment and to determine the appropriate level of care and custody.

Passages Alcohol and Drug Treatment Program (ADT) is a 50-bed, Level III.5 inpatient treatment program. All residents in the program participate in Drug and Alcohol Treatment, Dialectic Behavioral Therapy (DBT) Skills, Victimology, Parenting, Moral Reconciliation Therapy, Seeking Safety and Nutrition. Treatment for Gambling and Trauma are offered based on individual need.

As a Therapeutic Community (TC), Passages supports right living and the concept of changing unhealthy behaviors and thoughts to healthy ones. TC is used in correctional facilities to help individuals become part of a supportive community model. TC also supports drug-free and crime-free lifestyles.



"The Pre-Release Program was a blessing. I could not have done it on my own."

*-Andrea,
Passages Resident*

CAP CULINARY ARTS PROGRAM



The Culinary Arts Program (CAP) provides food service training and employment for up to 15 offenders who are within 24 months of release eligibility. Graduates of CAP complete 18-24 months of classroom instruction, perform in-house food service and receive job placement assistance and community work release.

CAP 2020 ACCOMPLISHMENTS

- Provides on average 1 catered event per month to community non-profits or government agencies.
- Partnerships Include: RiverStone Health, Strawberry Festival, Moss Mansion, Billings Job Service, Dress for Success, Montana Fair, Montana Legislature, U.S. Veterans Stand Down, Billings Clinic, and Billings Probation and Parole, among others.
- Certified as a Montana Department of Labor Pre-Apprenticeship program.



COGNITIVE BEHAVIORAL INTERVENTION - SUBSTANCE USE

Alternatives initiated one of the first programs in Montana supported by evidence-based practices and CPC.

Program Modules address the client thought process and behavior outcomes resulting from thoughts related to substance use. Eighteen staff members received 32 hours of certification training.



HI-SET/GED PROGRAM

In 2018, Passages and School District 2 launched the Hi-Set/GED Program which enables Passages clients the opportunity to earn their GED through coursework and testing. Billings School District 2 Adult Basic Education staff work with Julie Draeger, Case Manager, to complete 16 hours of coursework each week.

Significant achievement:
11 GEDs received in the 2019-2020 school year.



COMPASS

"As someone who originally did not look forward to treatment, I can strongly say now that I'd encourage anyone in need of help to take IOP and Aftercare as they are very beneficial in everyday life."
— Julie,
Level 1 Outpatient



THE BIG MOVE

METHAMPHETAMINE IS THE NUMBER ONE ILLICIT DRUG OF CHOICE FOR PATIENTS IN TREATMENT IN YELLOWSTONE COUNTY. APPROXIMATELY 79,000 MONTANANS ARE STRUGGLING WITH SUBSTANCE USE DISORDERS, AND 92% ARE NOT RECEIVING TREATMENT.¹

Yellowstone County has experienced a significant increase in crime and substance abuse over the past several years. According to a SAMHSA survey, between 2010 and 2017 violent crime increased 81%; the number of positive tests for methamphetamine use at the Probation and Parole increased by 865% between 2010 and 2018; and from 2014 to 2018, child neglect cases grew 149% with 80% of those tied to methamphetamine use.¹

While Alternatives has been available to provide treatment for substance use, monitoring, and supervision services to individuals referred from the courts, Child and Family Services, and the Department of Corrections Probation and Parole, it was evident in working with groups such as Substance Abuse Connect there was a service capacity shortage.

To address the shortfall, Alternatives – in collaboration with other community partners – participated on the Substance Abuse Connect Executive Committee, gained approval from the State of Montana as a recognized Substance Use Disorder and Mental Health Treatment provider, and became certified with Medicaid and all major insurance providers.

In addition, to enhance program efficiency and effectiveness, Alternatives made the decision to consolidate Administrative, Beta, and Compass staff and services into a single facility. In November 2018, Alternatives purchased a building located at 2130 3rd Avenue N. Renovations were completed a year later and in January 2020, Beta Alternatives relocated their 17-member team to the facility. Today, more than 40 staff members work in the ABC Building, providing comprehensive treatment services, supervision, and monitoring to more than 7,000 community clients annually.

¹ SAMHSA, Center for Behavioral Health Statistics and Quality, National Survey on Drug Use and Health, 2016 and 2017.

Compass is the treatment arm of Alternatives with specialties in Substance Use Disorders, Mental Health, Partner Family Member Assault Programming, Cognitive Restructuring, and residential and Community Treatment. Compass works directly with the residential treatment programs, community referral sources including the United States Probation Office, Yellowstone County and Billings Municipal Courts, and the Department of Health and Human Services Child Enforcement Division. As the need for treatment programs has expanded, so too have Alternatives' treatment operations. Services for pre-release offenders were typically housed at the residential facilities. However, with the need for more office and classroom space, the creation of Compass provides a one stop shop for residential and community clients. The abundance of service offerings allows referral sources to match client needs to specific judgement requirements and offender risk assessment needs. There are more than 25 licensed treatment staff employed at Alternatives.

Compass now offers Level 2.1 Intensive Outpatient treatment services. The 8-week program includes daily group and individual counseling sessions followed by aftercare for approximately 12 weeks.

Alternatives has a goal to provide all levels of treatment necessary to meet the needs of our prerelease residents and the community at large and is able to bill Medicaid and all major insurances.



Danielle Dunn
Compass Clinical Supervisor

Compass counselors are located in the ABC Building and community-based clients participate in groups hosted in the ABC facility.

ACT/PRIME FOR LIFE

ACT/Prime for Life (Assessment Course, Treatment) is now being offered twice a month after an eight-year hiatus. ACT is required under Montana's DUI laws for re-obtaining a driver's license. The program includes a Substance Use Disorder Assessment (SUD), a twelve-hour course and referral for treatment, if needed.

COMPASS
RECEIVED A
4.71
OUT OF
5.0
CLIENT
SATISFACTION
RATING

MORE THAN
520,000
COMMUNITY TREATMENT
DAYS WERE COMPLETED IN 2020.

SERVICES INCLUDE:

- Prime for Life
- Moral Reconciliation Therapy
- Cognitive Restructuring/Criminal Thinking Errors
- Partner Family Member Assault
- Short Term Residential Treatment
- Level 1 Substance Use Disorder Outpatient
- Level 2.1 Substance Use Disorder Intensive Outpatient
- Level .5 Early Education
- Aftercare
- United States Probation Office Level 3.5 Residential Inpatient
- Shoplifting
- Minor in Possession
- Tobacco Cessation for Minors
- Substance Use Disorder Evaluation
- Dangerousness and Violence Risk Assessment
- Mental Health Assessments
- More than 30 Self-Directed Education Programs



BETA ALTERNATIVES

In 1984, the Beta Alternatives Program was started to offer alternatives to jail placement for indigent offenders and those convicted of misdemeanor offenses. Today, Beta Alternatives offers a wide range of community-based correctional programs in Yellowstone, Carbon and Stillwater Counties, serving more than 7,000 clients across 57 programs.

The ability to divert offenders to community-based correctional programs saves taxpayers money through the use of supervision and planning, offenders pay their dues to society and by placing the accountability on defendant/offender, rather than have citizens pay to house them in jails and prisons. Beta Alternatives provides a structured program to teach offenders life skills and behavior modification techniques. Offenders must maintain employment, which provides millions of dollars annually in community spending, family support, restitution, and medical payments. When offenders are required to complete

programming and pay their program fees and maintain employment, it relieves the burden on everyday taxpayers and requires responsibility on the part of the offender.



Justina Goldhahn
Beta Alternatives Supervisor



From left: Annette Saylor, Justina Goldhahn, Eric Braun, Kara Jablonski-Padilla



BETA ALTERNATIVES 2020

- Beta Alternatives received nearly 7,000 new referrals across 57 programs
- 1,700 clients were referred to one of 36 treatment or education programs
- 400,000 days of probation and monitoring supervised by 17 staff members
- Between probation and monitoring programs, the equivalent "jail day population" averages 1,300
- Each day, an average daily population of 780 clients are supervised in probation, pre-trial supervision, and monitoring programs
- Beta saves Yellowstone County nearly \$4 million annually through its client pay and subsidy programs by supervising clients in the community rather than housing at Yellowstone County Detention Facility¹
- Nearly 78% of Beta clients successfully completed their programs with local courts
- 16,000 random drug and alcohol tests resulted in 85% compliance rate

PEACE OFFICE STANDARDIZED TRAINING (POST)

In November 2019, Montana offered the first Peace Officer Standardized Training (POST) Basic Course for pre-trial and misdemeanor officers. Four staff attended. Eric Braun was unanimously elected Class Representative. Eric was acknowledged at the graduation ceremony and spoke on the group's behalf with eloquence and humor.

¹ Based on a daily cost to taxpayers of \$30/day for 390 (40% of the average daily population) clients supervised by Beta if house in YCDF for one year.

"I am very happy with the program. The managers I dealt with were very accommodating, professional, and helpful in NOT the greatest circumstances."

– Marc,
PharmCheck Drug
Patch Client



RECIDIVISM, RESPONSIBILITY, AND SUCCESS

RECIDIVISM IS DEFINED AS THE RETURN TO PRISON WITHIN 3 YEARS OF RELEASE

Nearly 1,200 offenders release from prison each year according to the Montana Department of Corrections. Pre-release Centers (PRCs) are a step-down approach with the primary purpose to prepare offenders for successful re-entry. Services and activities focus on behavior modification using evidence-based approaches that address offender individual risks and

ALTERNATIVES'
RECIDIVISM RATES
ARE LESS THAN
HALF
OF THE NATIONAL
AVERAGE AT
27.6%
OVER 3 YEARS¹

needs. Each offender must apply to be accepted in community placement (PRCs). A Screening Committee at each facility meets weekly to review applications while assessing the risk to community, level of supervision and treatment needed, and appropriateness of community placement. Of the applications received at Alpha House in 2020, only 49% were admitted. At Passages, only 65% were accepted.

As the main focus of PRC is setting up offenders to be substance-free, crime-free,

MONTANA RECIDIVISM
RATES FOR OFFENDERS
RELEASED IN 2017 WERE
32.2%
FEMALE
39.5%
MALE AND
38.6%
COMBINED²

and productive members of society after incarceration, it is imperative to evaluate the effectiveness on recidivism. Recidivism is defined as a return to prison within 3 years, and according to the Bureau of Justice Statistics on a 2018 study reviewing¹ nationwide data from 2005-2014, the return to prison rate was 68% rate after 3 years. Since 2014, Alternatives Pre-release residents recidivate less in the first 3 years after release

compared to the national average by 40%. Alternatives Pre-release offenders coming directly from a prison setting recidivism rates are 9.9% after 1 year, 21.6% after 2 years, and 27.6% after 3 years.

ALTERNATIVES, INC. RECIDIVISM STATISTICS

(Rate of return to prison within 3 years for clients graduating in 2014-2017)

| | AFTER 1 YEAR | AFTER 2 YEARS | AFTER 3 YEARS |
|----------|--------------|---------------|---------------|
| Female | 9.1% | 18.2% | 20.0% |
| Male | 10.2% | 22.6% | 29.9% |
| Combined | 9.9% | 21.6% | 27.6% |

REDUCING JAIL POPULATION THROUGH INNOVATIVE PROBATION

Alternatives and Yellowstone County Justice Court are diligently working to expand the Innovative Probation program. Innovative Probation is an intensive misdemeanor probation program that provides incentives at the time of sentencing to ensure compliance with the terms/conditions of sentence. The program provides a more stable foundation financially, professionally, and personally for individuals sentenced on misdemeanor crimes to succeed upon discharge.

Currently clients get credit toward their court-ordered fines when they are able to show proof of completing the objectives in their case plans (i.e., expenses paid toward Domestic Violence treatment, costs associated

with obtaining a parenting plan, costs associated with a security deposit for rental property).

All clients sentenced to Innovative Probation have received ORAS-MAT and ORAS-MST risk assessments as well as individualized case management plans from certified probation officers. To date, clients remain compliant without the need for further interventions This new program has led the way for the development of a Domestic Violence Specialty Court – the first of its kind in Montana. Once up and running, this court will act to reduce jail population, increase the use of intervention programs, reduce recidivism, expedite processing of domestic violence cases, and help victims recover and become independent.

1. 2018 Update on Prisoner Recidivism <https://www.bjs.gov/content/pub/pdf/18upr9yfup0514.pdf>

2. MT DOC 2021 Biennial Report <https://cor.mt.gov/Portals/104/Legislative%20Agency%20Materials/All%20Agency%20Materials/Biennial%20Report%202021.pdf?ver=2020-12-16-142148-960>



DEDICATION DESERVES RECOGNITION

The positive impacts made in people’s lives and in the community through Alternatives, Inc. would not be possible without the hard work and dedication of our employees. We are grateful to all 168 staff members who exemplify professionalism in their service and commitment. We recognize the following individuals who celebrated anniversaries in 2020 for their longstanding commitment:

IN 2020 **16** STAFF MEMBERS RECEIVED PROMOTIONS AND **39** NEW EMPLOYEES JOINED THE ALTERNATIVES TEAM



Justina Goldhahn (L) and Elizabeth Cox

5 YEARS

- Arthur Aue
- Ellen Moore
- Susy Paddock
- Brigida Solorio
- Terri Thornell
- Joey Anderson
- Tana Curtiss
- Chelsey Duenow
- Diane Fisher
- Misty Martinez
- Patrick McNellis



John Williams (L) and Allan Anderson

10 YEARS

- Elizabeth Cox, Stillwater Jail Alternatives Manager
- Jimmy Casas, Alpha Client Advisor

15 YEARS

- Allan Anderson, Alpha House Case Manager

20 YEARS

- Mick Charvat, Licensed Addiction Counselor



Danielle Dunn (L) and Mick Charvat

40 YEARS

- David Armstrong, CEO



David Armstrong, CEO



Jimmy Casas (L) and Amanda Roos



THANKING OUR COMMUNITY PARTNERS

Each year, nearly 500 community clients provide more than 10,000 hours of community service to 56 community partners. In 2020, this program was suspended due to COVID-19. We remain grateful to our community partners and look forward to continuing this effort when appropriate.

2020 Partner Achievements

- Yellowstone River Parks Association and Help for Homeless Pets continued to help clients pay off court fines through regular service.
- Dress For Success provided clothing for Passages women.
- Alternatives received the Good Neighbor Award from the South Side Neighborhood Task Force (SSNTF).



Alternatives Gives Back



Alternatives staff provided maintenance at Family Support Network and Dover Park during the United Way Annual Day of Caring.



Staff from Passages represent the organization in the “Bright Side Business” campaign hosted by RiverStone Health’s Healthy by Design and the SSNTF.

BOARD OF DIRECTORS

OFFICERS

- Todd Buchanan, President
Buchanan Capital Inc.
- Lisa Skriner, 1st Vice President
Montana State University Billings
- Vern Petermann, 2nd Vice President
Retired- Billings Police Department
- Ziggy Zigler, Secretary/Treasurer
Retired- Business Owner
- Walt Backer, Past President
Retired- Northwestern Energy

MEMBERS

- Alex Nixon
Carbon County Attorney
- Beverly Bilyeu-Carkeek
Retired – Employment Consultant
- Bill Bullock
Carbon County Commissioner
- Blade Stiller
First Federal Bank and Trust
- Charlotte Pollington
Retired- Registered Nurse
- Don Jones
Yellowstone County Commissioner, Business Owner
- Dr. Melinda Arnold
Provost- MSU Billings
- Jay Thompson
First Interstate Bank
- Josh Billstein
Billings Clinic
- Judy Towleron
Retired- Billings Job Service
- Kathleen Candelaria
Meridian Real Estate
- Katie Michunovich
Western Security Bank
- Kenneth Peterson
Attorney
- Lisa Wallace
Rocky Mountain College
- Melanie Schwarz
Big Sky Economic Development
- Robyn Driscoll
Former Yellowstone County Commissioner
- Tom Hanel
Berkshire Hathaway HomeServices
- Tyrel Hamilton
Stillwater County Commissioner
- Darren Zent
Adult Probation & Parole

BOARD ANNIVERSARIES: Tom Hanel & Judy Towleron- 15 years; Walt Backer- 10 Years; Todd Buchanan & Lisa Wallace- 5 Years. **NEW MEMBERS:** Tyrell Hamilton, Don Jones, Melinda Arnold, Blade Stiller, Katie Michunovich, Jay Thompson, Darren Zent and Josh Billstein.



ALTERNATIVES

CORRECTIONS TO COMMUNITY

2120 3RD AVE N, BILLINGS, MT 59101 • 406.256.3501 • INFO@ALTINC.NET • WWW.ALTINC.NET

FOLLOW US ON

